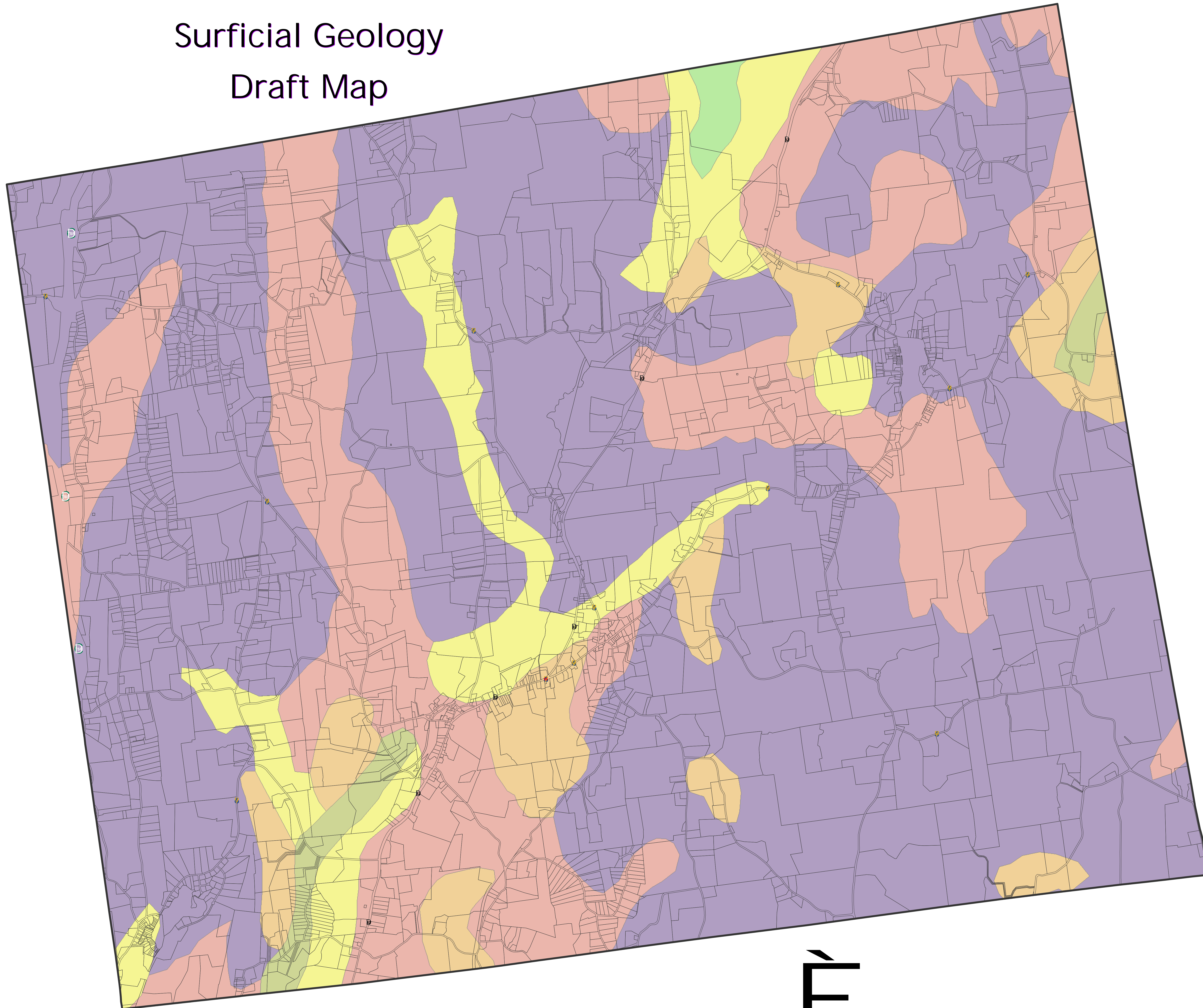


Town of Stanford Surficial Geology Draft Map



Legend

- Municipal Boundary
- Parcel Boundaries
- Surficial Geology Composition**
- Bedrock
- Kame Deposits
- Lacustrine Delta
- Lacustrine Sand
- Lacustrine Silt and Clay
- Outwash Sand and Gravel
- Recent Alluvium
- Swamp Deposits
- Till